

1 FURNITURE COLLECTION



IAN DOLLAR  
INTERIOR DESIGN

IAN DOLLAR

SEGMENT 2:  
REVIT FAMILIES

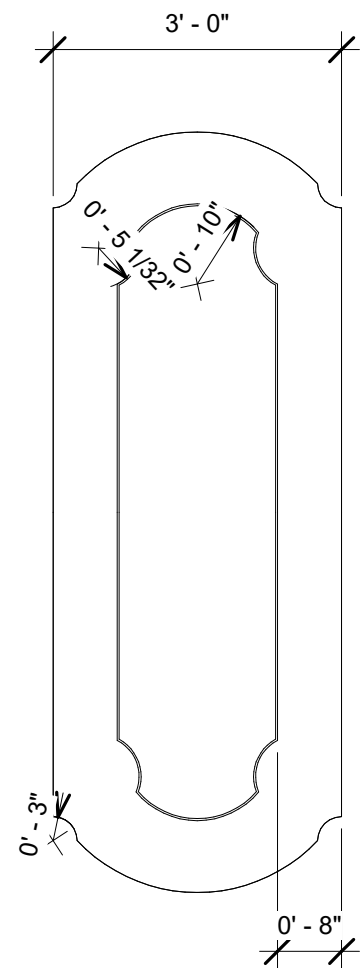
ID2785 COMPUTER VISUALIZATION

DATE:

4/13/23

FURNITURE  
COLLECTION

ID13.00

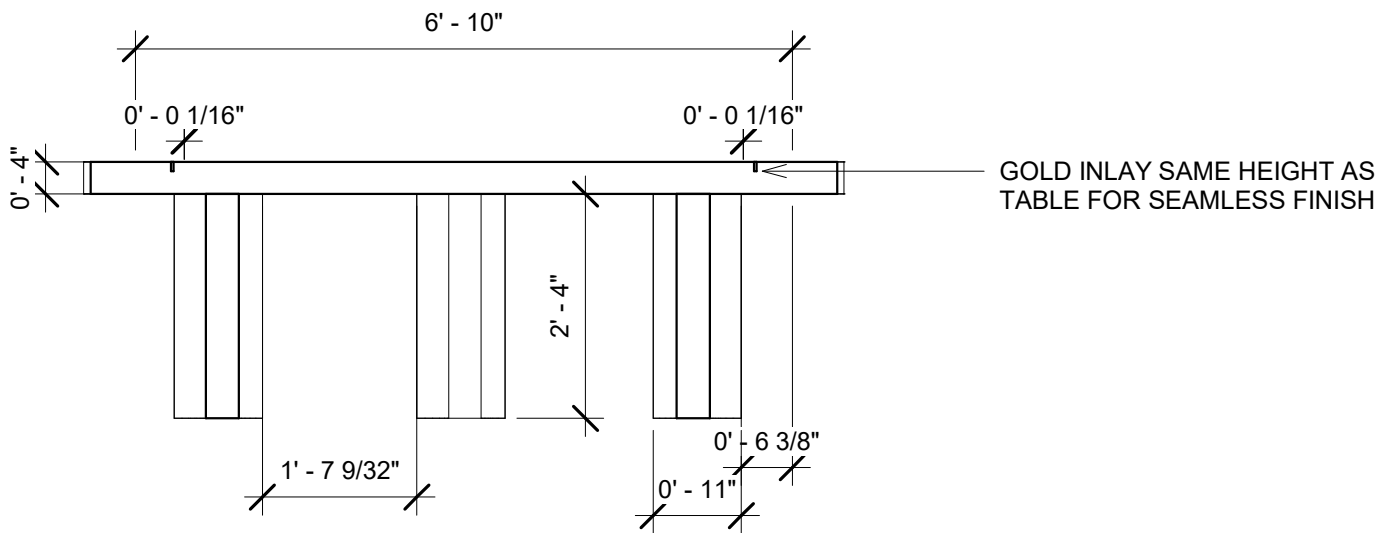
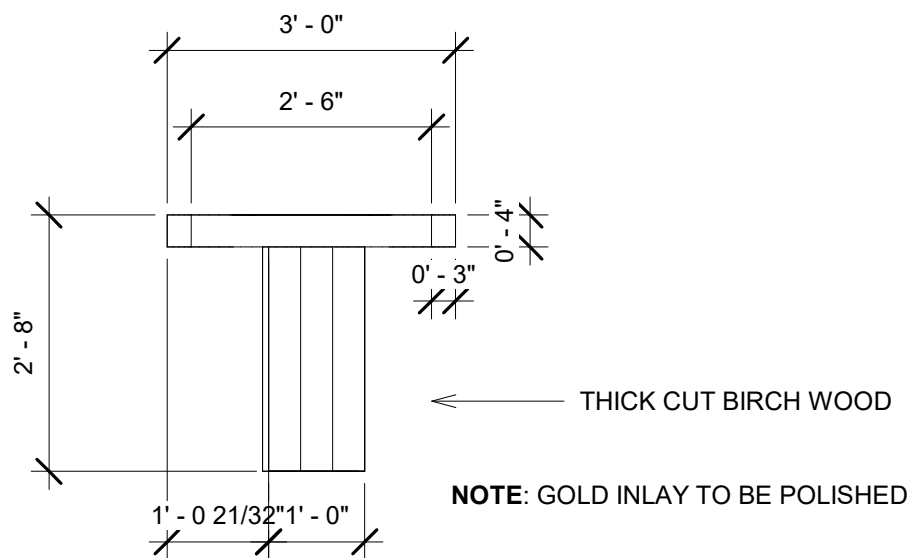


THE DINING TABLE FEATURED BELOW FULLY EMBODIES THIS COLLECTION WITH A MIXTURE OF SQUARED AND ROUNDED EDGES. THE TABLE IS MADE OF BIRCH WHICH IS FINISHED IN A HIGH GLOSS. THERE IS A GOLD INLAY THAT FOLLOWS THE EDGES OF THE TABLE FOR ADDED CHARACTER AND IS GREAT FOR CENTER PIECES. THIS TABLE SEATS EIGHT PEOPLE COMFORTABLY.



1 DINING TABLE- PLAN VIEW  
1/2" = 1'-0"

2 DINING TABLE-ISOMETRIC VIEW



4 DINING TABLE- FRONT ELEVATION  
1/2" = 1'-0"

3 DINING TABLE- SIDE ELEVATION  
1/2" = 1'-0"



IAN DOLLAR  
INTERIOR DESIGN

IAN DOLLAR

## SEGMENT 2: REVIT FAMILIES

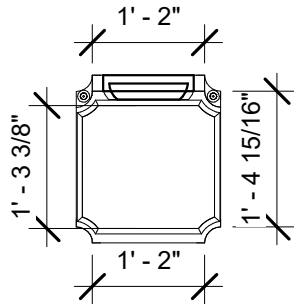
4/13/23

DATE:

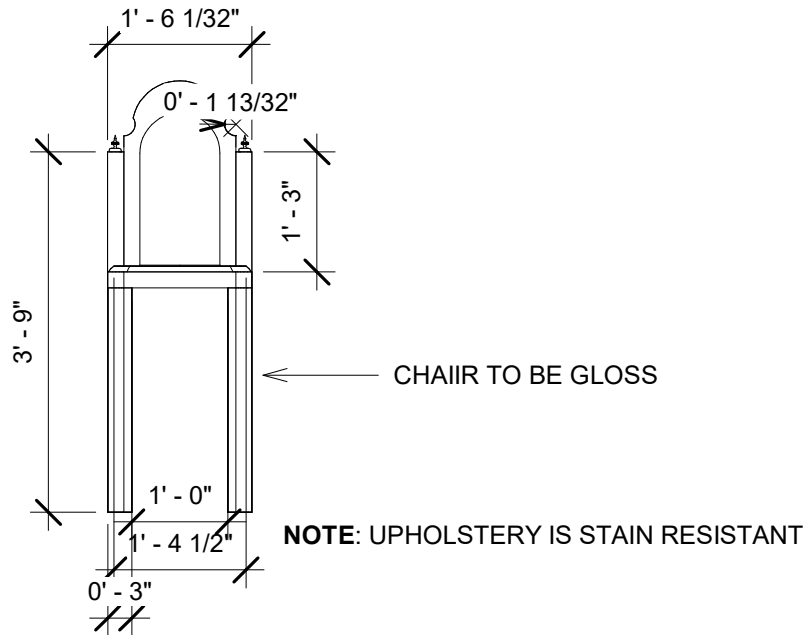
ID2785 COMPUTER VISUALIZATION

DINING TABLE

ID13.10



1 DINING CHAIR- PLAN VIEW  
1/2" = 1'-0"

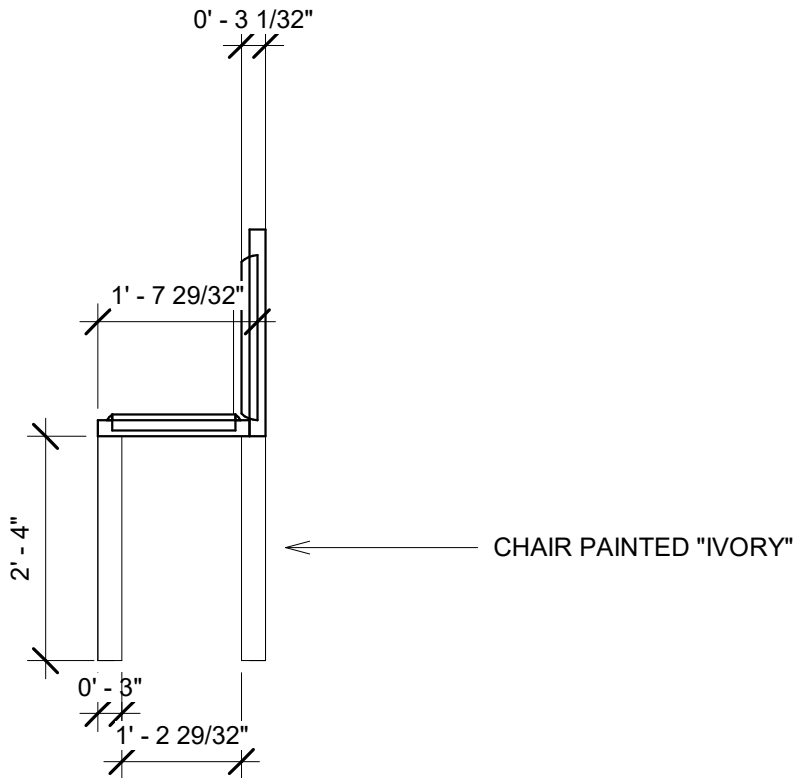


3 DINING CHAIR-FRONT ELEVATION  
1/2" = 1'-0"

THIS HAMPTONS INSPIRED DINING CHAIR SPORTS A PLUSH BACK AND GLUTE CUSHION, UPHOLSTERED IN A VINTAGE FLORAL PRINT FOR ADDED COLOR. THE CHAIR IS MADE OF OAK AND PAINTED IN "IVORY".



2 DINING CHAIR- ISOMETRIC VIEW



4 DINING CHAIR- SIDE ELEVATION  
1/2" = 1'-0"



IAN DOLLAR  
INTERIOR DESIGN

IAN DOLLAR

## SEGMENT 2: REVIT FAMILIES

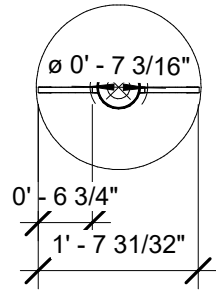
ID2785 COMPUTER VISUALIZATION

DATE:

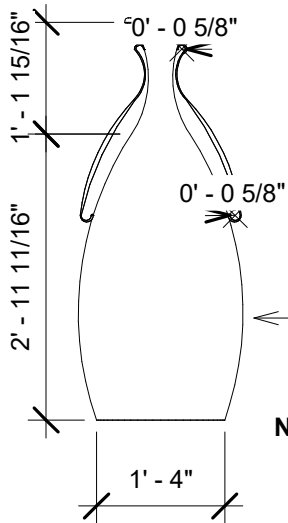
4/13/23

DINING CHAIR

ID13.11



1 DECORATIVE OBJECT- PLAN VIEW  
1/2" = 1'-0"



HANDPAINTED PORCELAIN

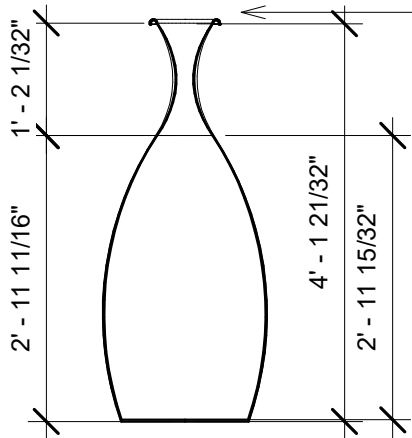
NOTE: HANDLES OF URN SHOULD BE POLISHED AND SHINED

3 DECORATIVE OBJECT- FRONT ELEVATION  
1/2" = 1'-0"

THIS URN IS A GREEK INSPIRED PIECE. ITS GLAZED PORCELAIN BODY FLAUNTS A VIBRANT BLUE DESIGN, AND ITS HANDLES ARE POLISHED GOLD. THE URN IS A HIGH END DECORATIVE OBJECT THAT WILL SET A ROOM APART FROM OTHERS.



2 DECORATIVE OBJECT- ISOMETRIC VIEW



ADD PALMS AND IVY INSIDE URN AFTER PLACEMENT.

4 DECORATIVE OBJECT- SIDE ELEVATION  
1/2" = 1'-0"



IAN DOLLAR  
INTERIOR DESIGN

IAN DOLLAR

SEGMENT 2:  
REVIT FAMILIES

ID2785 COMPUTER VISUALIZATION

DATE:

4/13/23

DECORATIVE  
OBJECT

ID13.12



IAN DOLLAR  
INTERIOR DESIGN

IAN DOLLAR

SEGMENT 2:  
REVIT FAMILIES

ID2785 COMPUTER VISUALIZATION

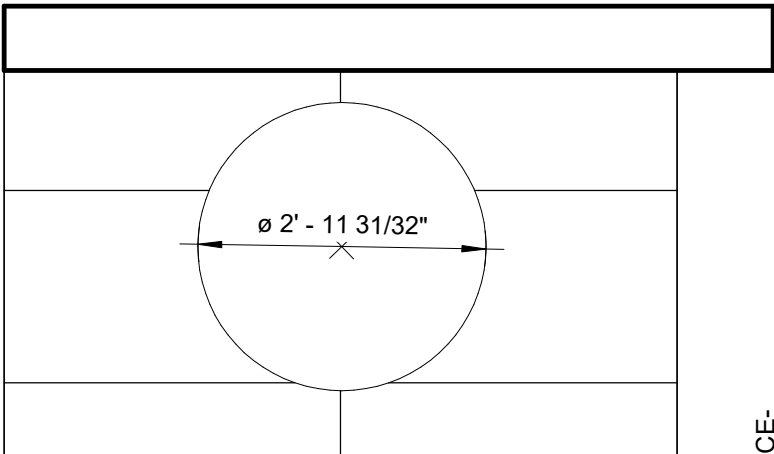
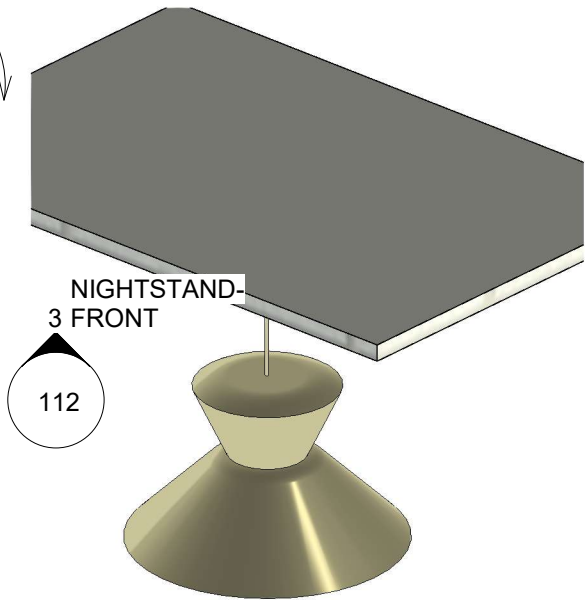
DATE:

4/13/23

PENDANT LIGHT

ID13.13

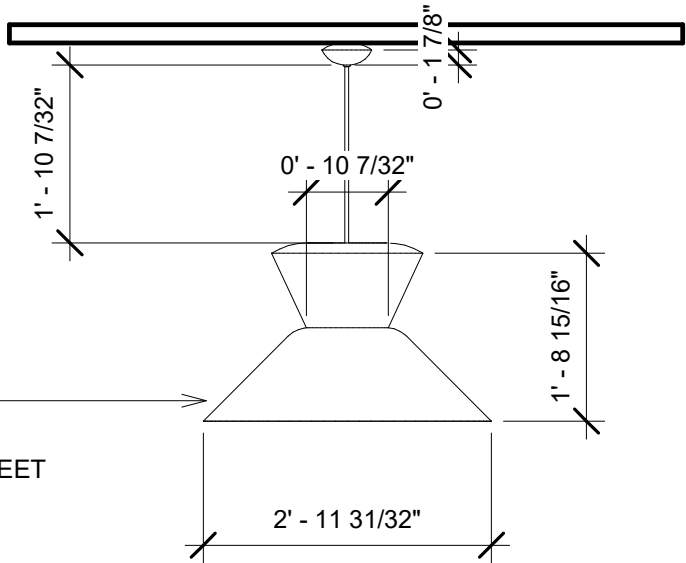
THE PENDANT LIGHT BELOW IS A LUXURIOUS, POLISHED GOLD FEATURE. THE SHAPE GIVES A MODERN TOUCH BECAUSE OF THE SIMPLICITY BUT IS SURE TO MAKE A SPACE MORE INTERESTING AND COMPLEX JUST BY ITS PRESCENCE.



SCONCE-  
SIDE  
- ELEVATION  
ID13.14

1 PENDANT LIGHT- PLAN VIEW  
1/2" = 1'-0"

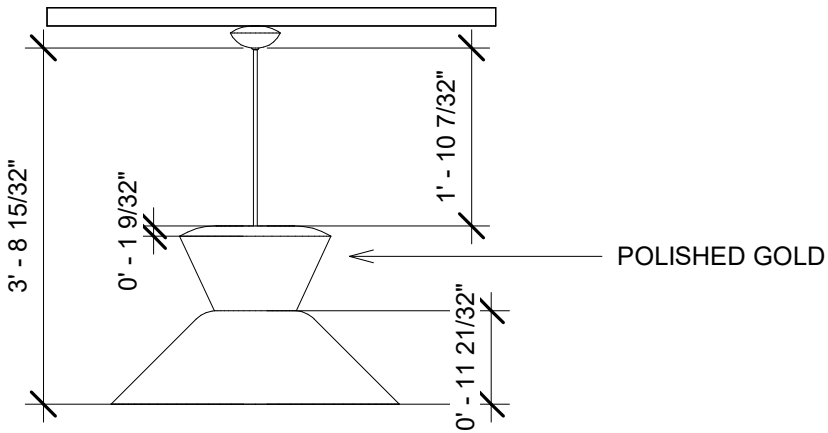
2 PENDANT LIGHT- ISOMETRIC VIEW



MODERN DESIGN

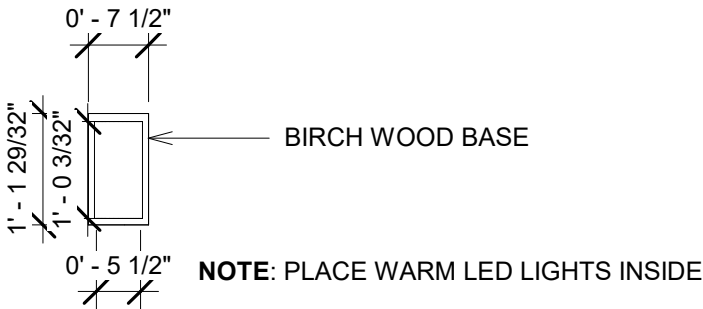
NOTE: SUSPEND THREE FEET

3 PENDANT LIGHT- FRONT ELEVATION  
1/2" = 1'-0"

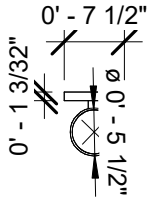


4 PENDANT LIGHT- SIDE ELEVATION  
1/2" = 1'-0"

C:\Users\13182\Desktop\Revit Class Folder\ID2785 Furniture Collection\ID2785 Furniture Collection.rvt

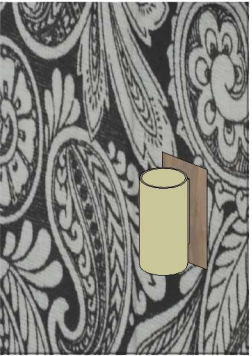


2 SCENCE- FRONT ELEVATION  
1/2" = 1'-0"

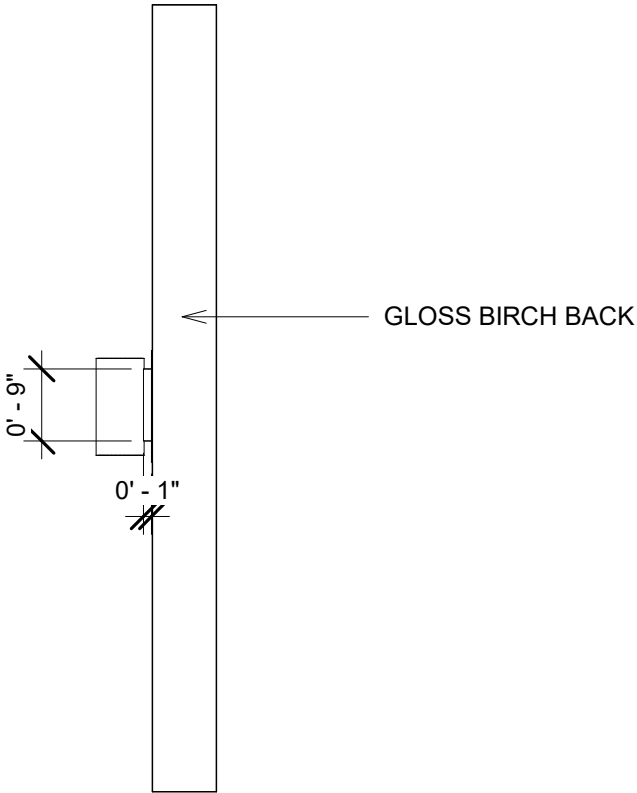


4 SCENCE- PLAN VIEW  
1/2" = 1'-0"

THIS SCENCE IS A MODERN LIGHT FIXTURE THAT DOESNT BRING TOO MUCH ATTENTION TO ITSELF, THOUGH IS A POLISHED GOLD WHICH ENHANCES IT. THE BACK IS ALSO GLOSSY BIRCH WOOD WHICH BREAKS UP THE GOLD. LIGHT FLOODS FROM BOTH ENDS ILLUMINATING A SPACE FULLY.



3 SCENCE- ISOMETRIC VIEW



1 SCENCE- SIDE ELEVATION  
1/2" = 1'-0"



IAN DOLLAR  
INTERIOR DESIGN

IAN DOLLAR

## SEGMENT 2: REVIT FAMILIES

ID2785 COMPUTER VISUALIZATION

DATE:

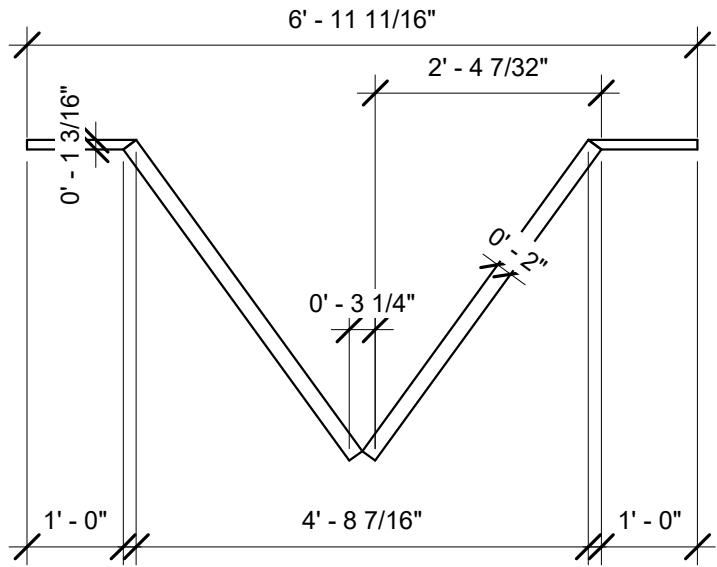
4/13/23

SCENCE LIGHT  
FIXTURE

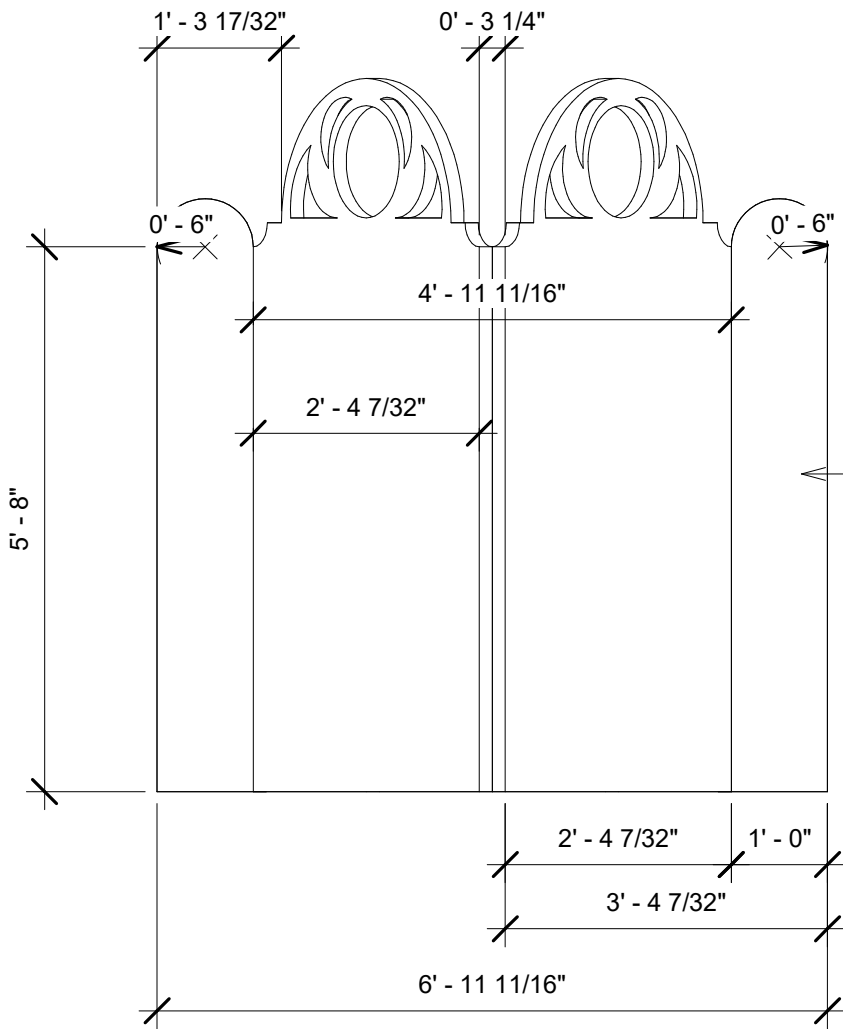
ID13.14



C:\Users\13182\Desktop\Revit Class Folder\ID2785 Furniture Collection\ID2785 Furniture Collection.rvt



4 ROOM DIVIDER- PLAN VIEW  
1/2" = 1'-0"

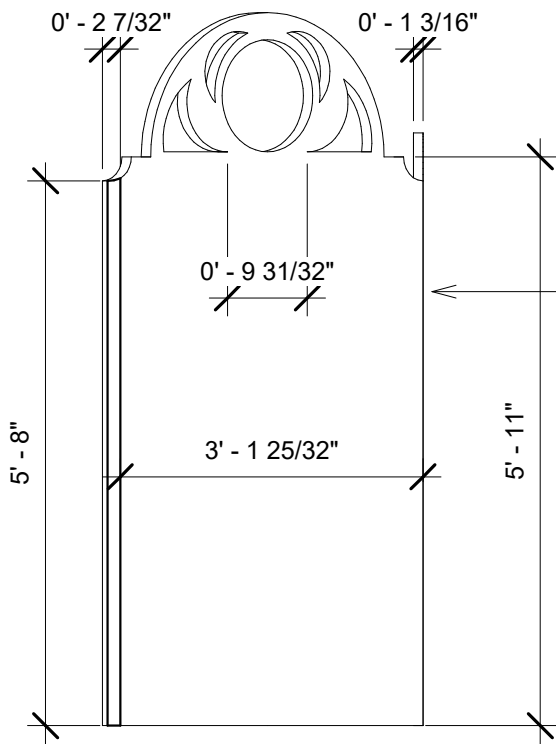


2 ROOM DIVIDER-FRONT ELEVATION  
1/2" = 1'-0"

THIS ROOM DIVIDER IS ENGLISH  
INSPIRED. FROM THE ATTENTION TO  
DETAIL IN THE OVERALL BODY TO ITS  
USE OF SOFT, FLORAL PATTERNS,  
THIS PIECE IS AN EXQUISITE, PLUSH,  
AND ORNAMENTAL ADDITION TO A  
BEDROOM OR PLAYROOM.



3 ROOM DIVIDER- ISOMETRIC VIEW



1 ROOM DIVIDER-SIDE ELEVATION  
1/2" = 1'-0"

FLORAL PRINT UPHOLSTERY

WIDE ENOUGH FOR A  
WIDE RANG OF PEOPLE

NOTE: TO BE PLACED IN CORNER OF ROOM



IAN DOLLAR  
INTERIOR DESIGN

IAN DOLLAR

SEGMENT 2:  
REVIT FAMILIES

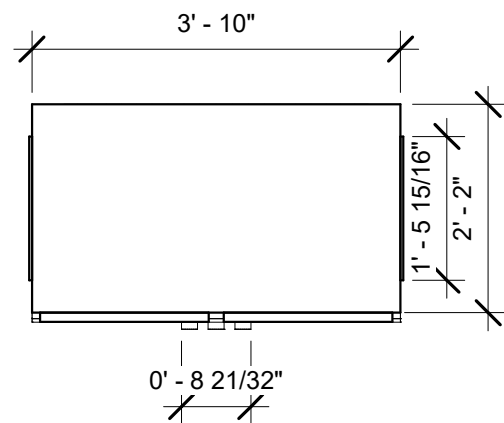
ID2785 COMPUTER VISUALIZATION

4/13/23

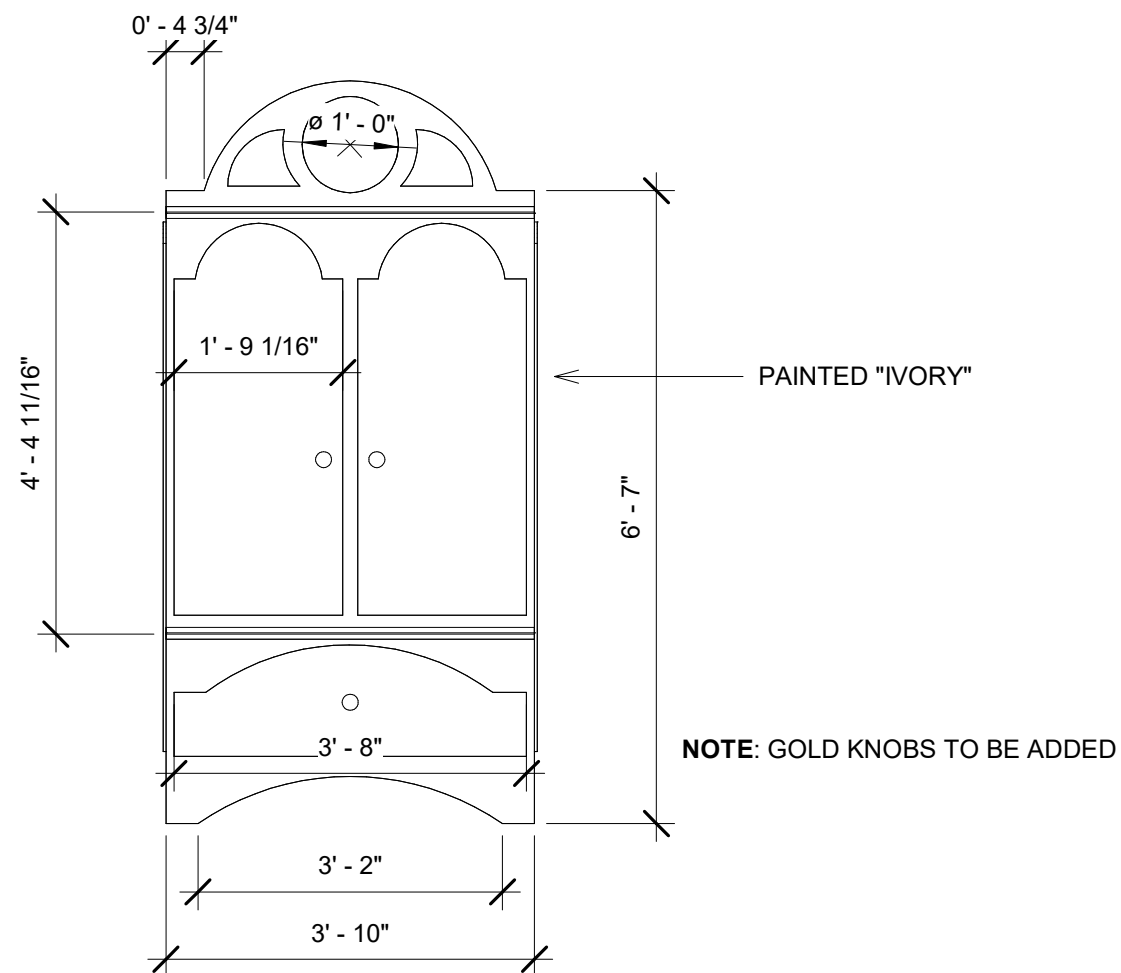
DATE:

ROOM DIVIDER

ID13.15

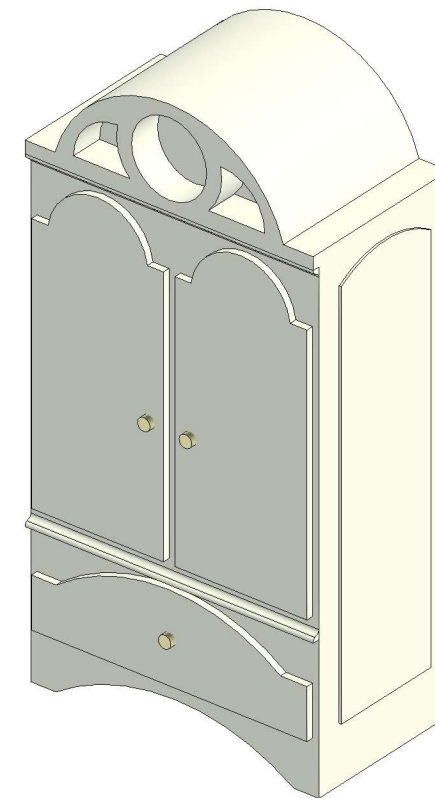


1 WARDROBE- PLAN VIEW  
1/2" = 1'-0"

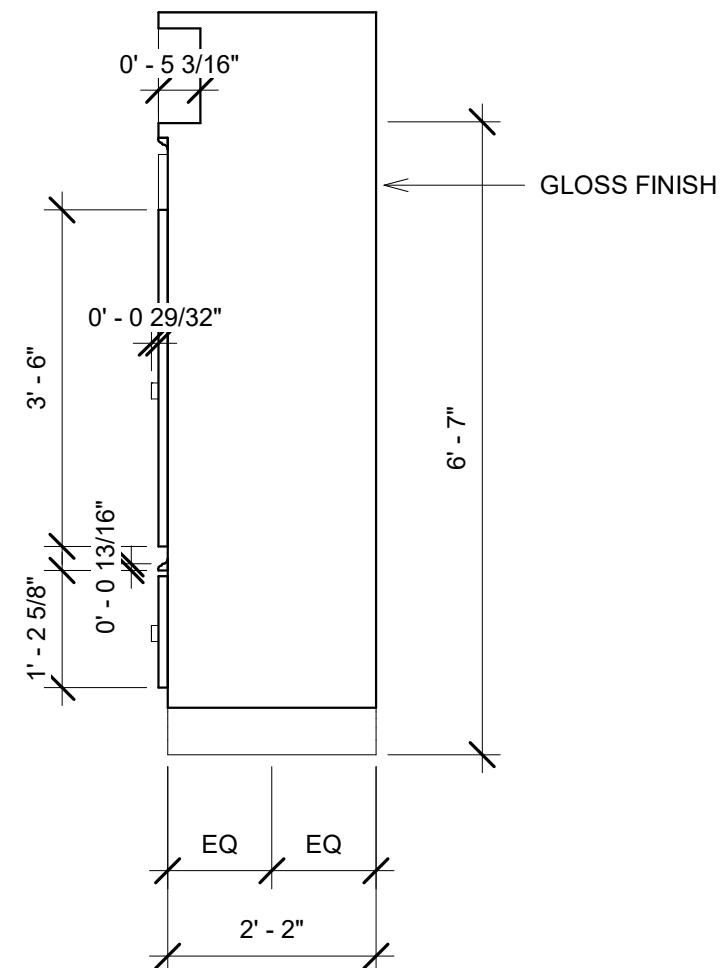


3 WARDROBE- FRONT ELEVATION  
1/2" = 1'-0"

THE WARDROBE  
FEATURED IS NOTHING  
SHORT OF GRAND. THE  
HIGH END "IVORY" PAINT  
ADDS A BRIGHT WHITE,  
GLOSSY TOUCH. THE  
HARDWARE IS POLISHED  
GOLD. THE DETAILING OF  
ALL THE ARCHES GIVES  
DIMENSION AND  
BEAUTIFUL PERSONALITY  
TO THIS HAMPTONS  
INSPIRED FURNITURE  
PIECE.



2 WARDROBE-ISOMETRIC VIEW



4 WARDROBE- SIDE ELEVATION  
1/2" = 1'-0"



IAN DOLLAR  
INTERIOR DESIGN

IAN DOLLAR

SEGMENT 2:  
REVIT FAMILIES

WARDROBE

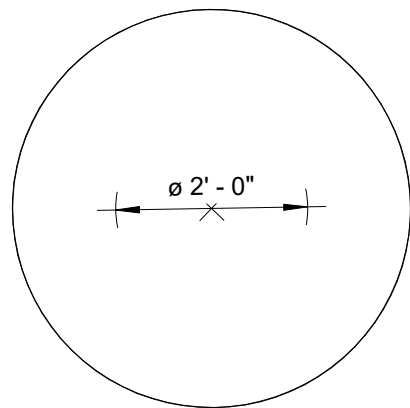
ID13.16

4/13/23

DATE:

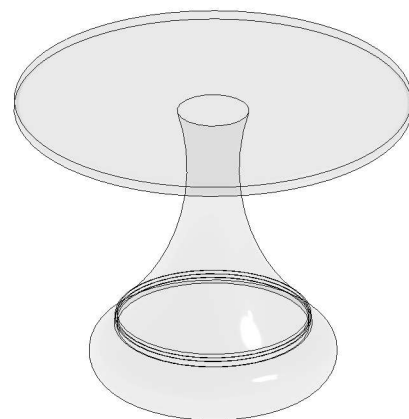
ID2785 COMPUTER VISUALIZATION



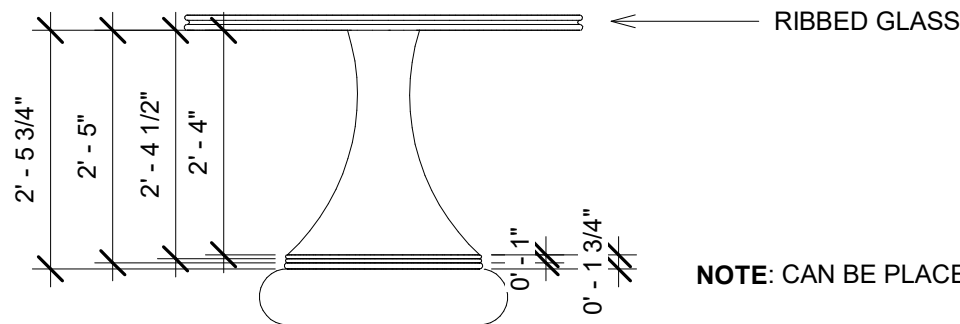


3 COFFEE TABLE- PLAN VIEW  
1/2" = 1'-0"

THIS MODERN COFFEE TABLE WAS DESIGNED TO LOOK AS IF IT WERE A BUBBLE, FLOATING IN THE AIR. ITS' ROUND EDGES AND CURVY PHYSIQUE SERVE AS A SAFETY MEASURE AS WELL AS A STYLISTIC APPROACH. FURNITURE CAN TAKE UP A LOT OF ROOM AND MAKE A SPACE FEEL CLUTTERED IF NOT DESIGNED RIGHT, BUT THIS PIECE, BEING MADE OF GLASS, WILL SERVE ALL OF YOUR NEEDS WHILE GIVING THE ILLUSION OF HAVING MORE SPACE. THE BUBBLE COFFEE TABLE IS A GREAT "CONVERSATION PIECE" FOR ANY ROOM IN THE HOUSE.

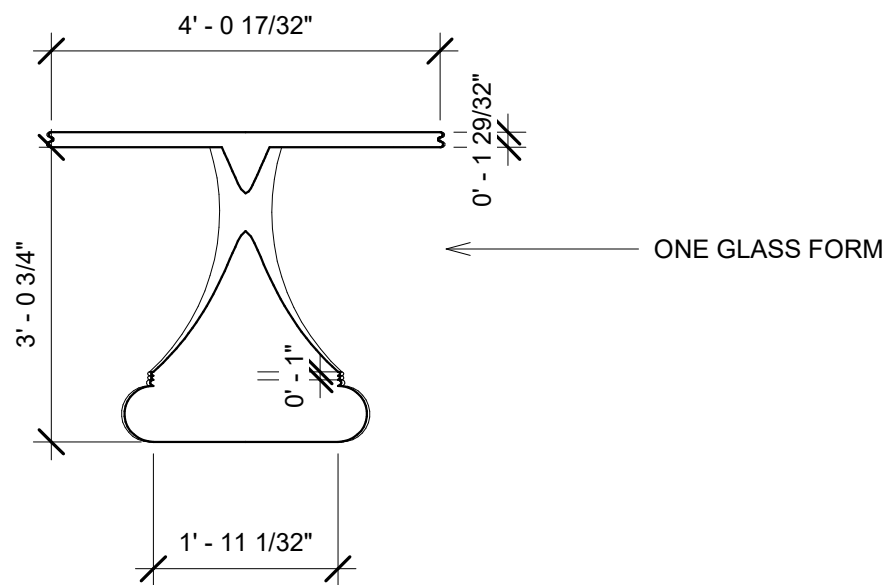


4 COFFEE TABLE- ISOMETRIC VIEW



NOTE: CAN BE PLACED ON ANY FLOOR SURFACE

2 COFFEE TABLE-FRONT ELEVATION  
1/2" = 1'-0"



1 COFFEE TABLE- SIDE ELEVATION  
1/2" = 1'-0"



IAN DOLLAR  
INTERIOR DESIGN

IAN DOLLAR

## SEGMENT 2: REVIT FAMILIES

ID2785 COMPUTER VISUALIZATION

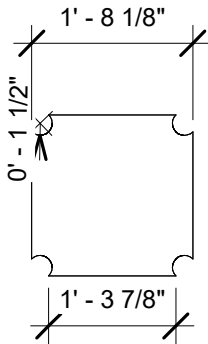
DATE:

4/13/23

COFFEE TABLE

ID13.17

C:\Users\13182\Desktop\Revit Class Folder\ID2785 Furniture Collection\ID2785 Furniture Collection.rvt



4 NIGHTSTAND- PLAN VIEW  
1/2" = 1'-0"

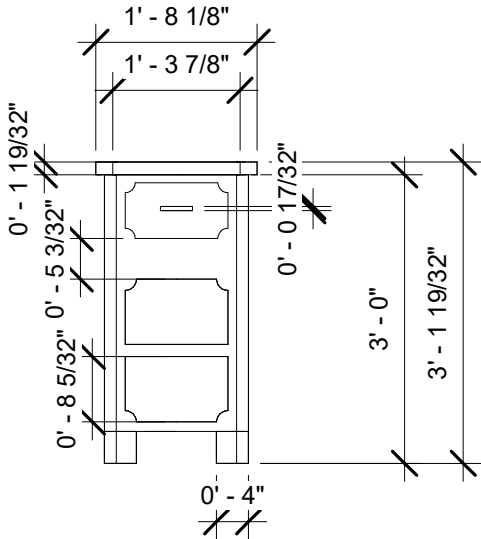
THIS NIGHTSAND IS VERY VINTAGE, EAST COAST, AND A GREAT PIECE TO YOUR BEDROOM. THE GLOSSY, BIRCH WOOD TOP TIES INTO THE OTHER PIECES AS WELL AS THE COMFORTING IVORY PAINT COLOR. THE HARDWARE IS POLISHED GOLD AND SERVES AS A POP OF LUXURY.



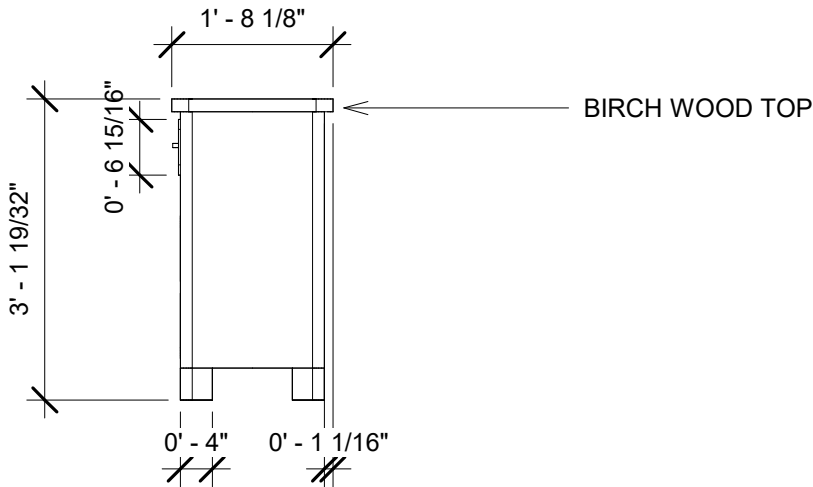
3 NIGHTSTAND- ISOMETRIC VIEW

PAINTED "IVORY" →

NOTE: POLISH GOLD HARDWARE



1 NIGHTSTAND- FRONT ELEVATION  
1/2" = 1'-0"



2 NIGHTSTAND- SIDE ELEVATION  
1/2" = 1'-0"



IAN DOLLAR  
INTERIOR DESIGN

IAN DOLLAR

SEGMENT 2:  
REVIT FAMILIES

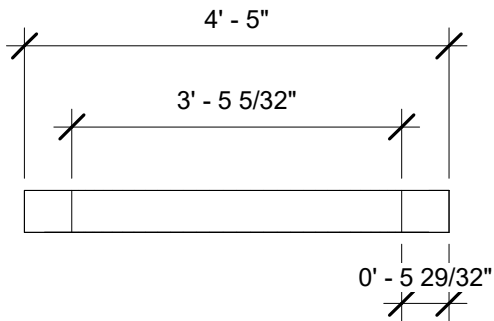
ID2785 COMPUTER VISUALIZATION

DATE:

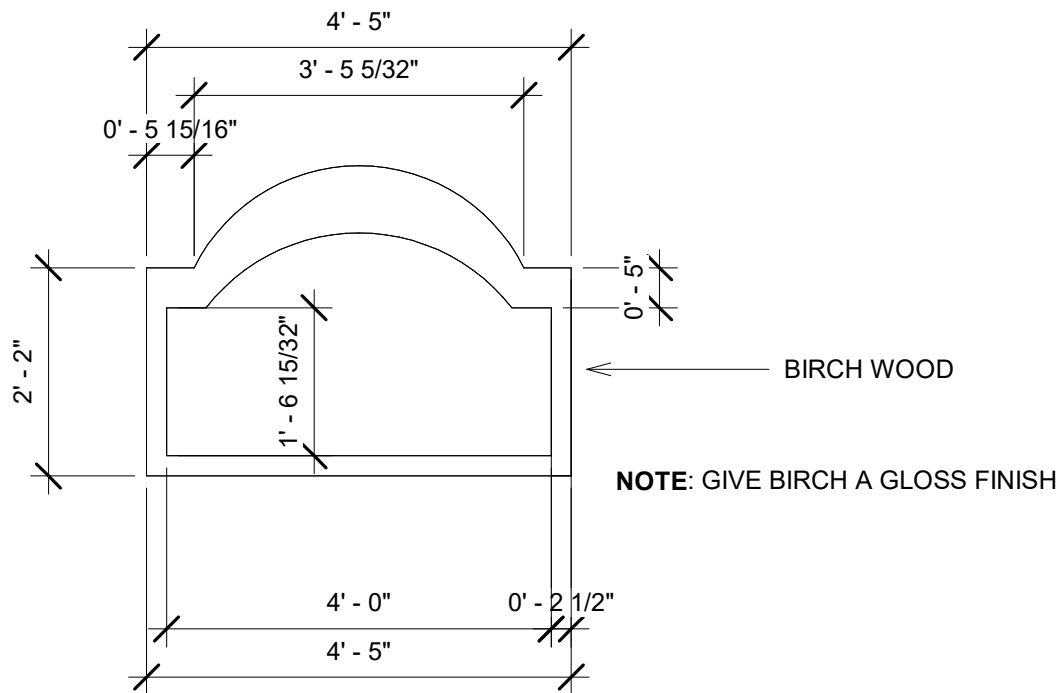
4/13/23

NIGHTSTAND

ID13.18

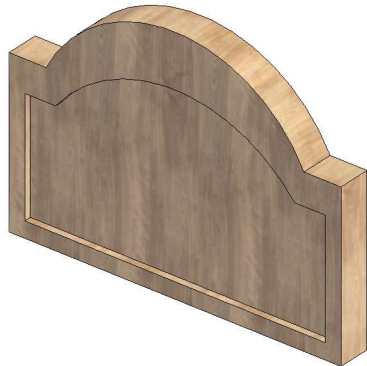


4 HEADBOARD- PLAN VIEW  
1/2" = 1'-0"

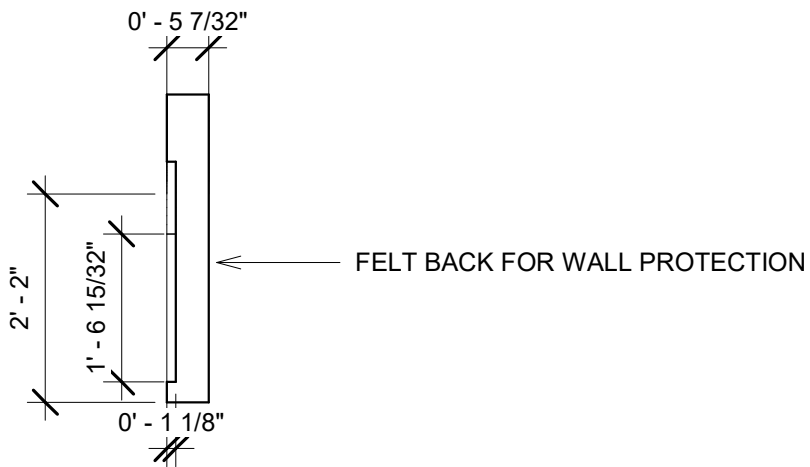


2 HEADBOARD- FRONT ELEVATION  
1/2" = 1'-0"

THIS HEADBOARD IS  
A GRAND PIECE  
THAT WILL ENHANCE  
ANY BED AND THE  
DESIGN OF A ROOM.  
IT IS A GLOSSY  
BIRCH WOOD THAT  
SHOWCASES TWO  
DIMENSIONS.



3 HEADBOARD-ISOMETRIC VIEW



1 HEADBOARD- SIDE ELEVATION  
1/2" = 1'-0"



IAN DOLLAR  
INTERIOR DESIGN

IAN DOLLAR

SEGMENT 2:  
REVIT FAMILIES

4/13/23

DATE:

ID2785 COMPUTER VISUALIZATION

HEADBOARD

ID13.19